

Circadian Lighting Luminaires



06:00



07:00



08:00

09:00



10:00



11:00



12:00



13:00

14:00



15:00



16:00



17:00

18:00

Connected by

WiZ

2024
PRODUCT CATALOGUE

Content and Product overview

P.4 What is Wiz ?

Wiz

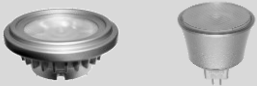
P.6 Product features and benefits

Connected by
Wiz



P.9 What is Circadian Lighting ?

P.12 Professional spot lamps



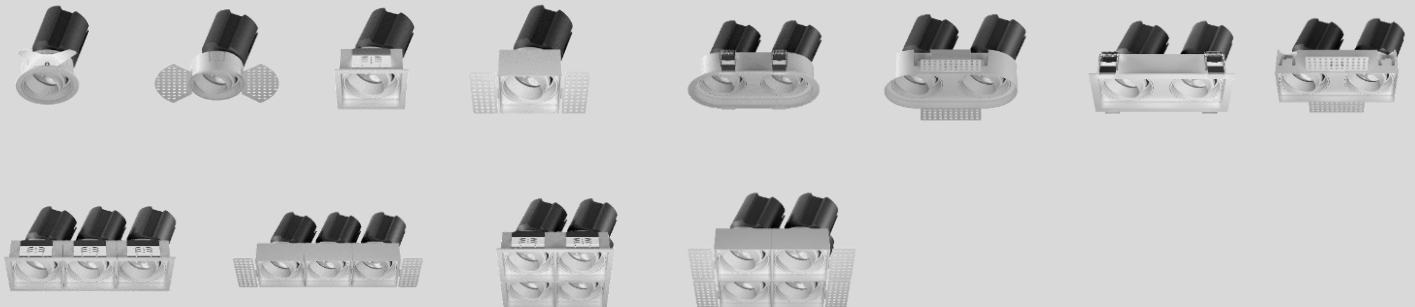
P.18 Track light



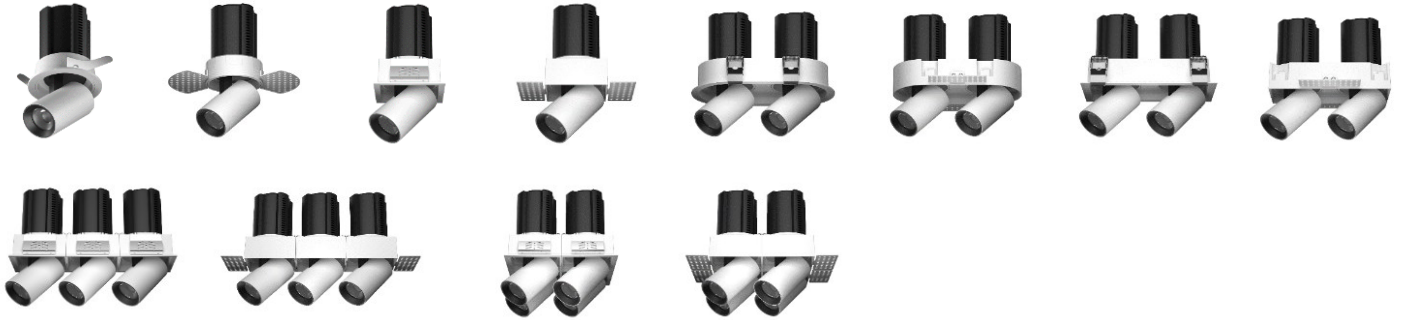
P.28 Recessed downlight



P.35 Gimbal downlight



P.44 Gimbal downlight (Extendable)



P.50 Gimbal downlight



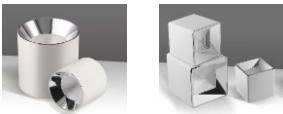
P.54 Wall washer downlight (Polarized)



P.58 Wall washer downlight



P.64 Surface mount downlight



P.68 Bridge Box, Transformer and luminaries PSU and Wireless Panel



What is Wiz ?



Wiz is a connected lighting system. Wiz lights are set-up through your Wi-Fi network and can be controlled with the Wiz application on your iOS or Android phone and tablet, with the Wizmote remote control or with your traditional power switch thanks to the Wizclick feature.

Additionally, you can schedule the behavior of your lights, for example to follow your routines or to simulate presence.

* Source: www.wizconnected.com



ALWAYS THE RIGHT MOOD



ALL IN THE FAMILY

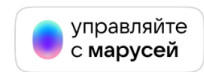


SAY THE MAGIC WORD

You can also now use Amazon Alexa or Google Home to control your lights with the power of your voice. Voice control is a new feature allowing you to connect your Amazon Echo or Google Home devices to your WiZ home, and simply speak to control your lights.

By recently interfacing with IFTTT you can now connect tons of features to your lights, such as the GPS of your phone, your favorite Weather app, or any other IFTTT connected device.

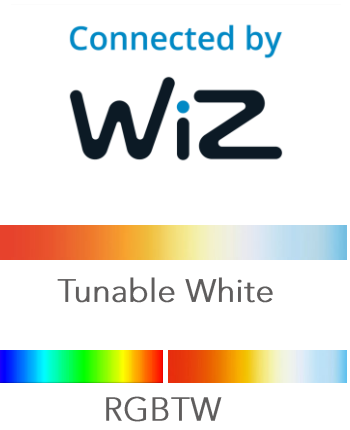
WiZ COMPATIBLE PARTNERS



Product features

Product Features

- Wiz connected
- Tunable White - Dual Colours Single COB LED
- RGBTW – R+G+B+CW+WW Single Points COB LED
- Circadian Light source from Tunable white 2800K to 6000K or RGBTW 2200K to 6500K
- Various beam angle selections
- High CRI (90 CRI) lighting closely replicates natural light.
- Automatic smooth transition colour tuning on colour and brightness.



Product features of Wiz



Easy commissioning

Complicated wiring is now a thing of the past. Save time with the WiZ Pro Setup app for direct effortless and wireless commissioning, even when the on-site Wi-Fi is not installed yet.

APP control

Once the lighting installation is connected to Wi-Fi, end users can control the lights from anywhere with the WiZ app. Customise your lighting to fit your application or choose between a variety of pre-designed light modes for a rich experience.



Advanced facilities management

Once the installation is connected to Wi-Fi, WiZ Pro Dashboard goes even further by allowing lighting installation control and remote site management. Get actionable light insights and monitoring with a clear overview of the entire installation.

* Source: www.wizconnected.com

Smart lighting control of Wiz

Simple Smart lighting control system

We use WiZ lighting system, which provides connected lighting solutions that can be controlled via Wi-Fi. The lights can be managed through mobile applications on iOS and Android devices, as well as through remote controls and traditional switches with smart features. The system offers a variety of functions, including scheduling, automation, and customizable lighting scenes, enhancing both convenience and user experience.

1. In-door control (No Wi-Fi needed)



Remote control / Wireless Panel / Sensor

2. Apps control (Wi-Fi needed)



Wiz Apps
(Android / iOS / PC)

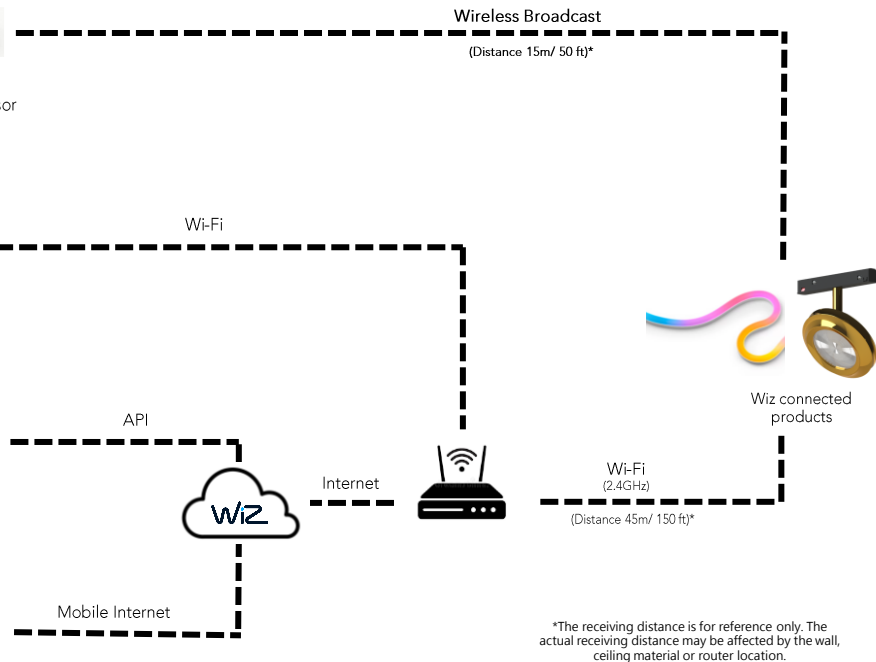
3. Smart device / Voice control (Wi-Fi needed)



4. Apps remote control (Internet needed)



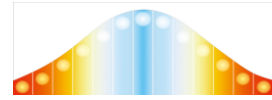
Wiz Apps
(Android / iOS / PC)



Simple setup and control - Remote control/Apps/Smart device

Selection of different application scenarios:

- Preset color temperature/brightness.
- Automatic mode - Changes color temperature/brightness.
- Rhythm mode - Adjusts color temperature and brightness.
- Scene mode - Awake, Reading, Relaxing, Sleep."



Circadian Lighting

What is Circadian Lighting?

- The secret to a healthy and happy life lies within your circadian rhythm, or internal biological clock, a 24-hour internal clock, with day and night.
- Circadian lighting allows you to regain control of your internal clock by adjusting the exposure to artificial light and making it work for you.
- Circadian lighting can help realign your sleep-wake cycle, aiding with deeper sleep and promoting overall long-term health. Improve productivity. Disrupting this cycle frequently has many adverse health effects and may be adding to your stress or health issues.

Benefits of Circadian Lighting?

- Increase productivity - Higher visual acuity, improve concentration, faster cognitive processing
- Healthier - Stronger immune system, Improve metabolism, blood pressure, heart rate and body temperature
- Well-being - Improve emotional wellbeing and mood, Reduce fatigues and reduce hyperactivity
- Mood and Comfort - Provide more nature and comfortable environment
- Customer Satisfaction - Boost customer dwell time and increase customer satisfaction, generate more sales
- Support for Healthcare: Benefits patients and elderly care with sleep and mood stability.

Circadian lighting is a holistic approach that enhances both wellness and functionality in indoor spaces.

Applications:

Home: To create a healthy living environment that supports natural sleep-wake cycles.

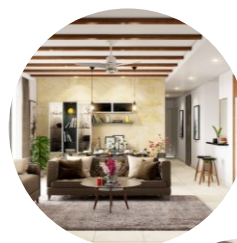
Offices: To enhance employee productivity and well-being.

Schools: To improve student concentration and learning outcomes.

Retail: To create an inviting atmosphere and influence customer behavior.

Healthcare: In hospitals and care facilities to support patient recovery and staff alertness.

Suitable for: shops, retail,
restaurants, hotels and
hospitality.



Product information

GENERAL PRODUCT INFORMATION

Colour temp.: Tunable White: 2800K - 6000K RGBTW: RGB+ WW = 2700K + CW = 6500K

CRI : 90 (Typ.) CRI 80 and 95 on request

Color Consistency: 3 Steps MacAdam

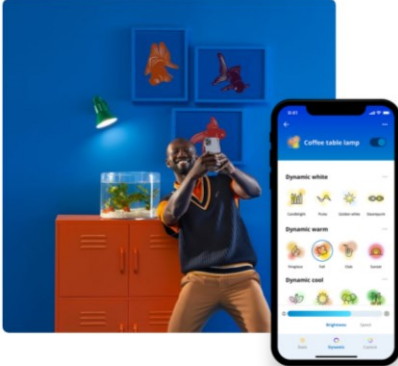
Selectable CCT: Tunable White: 2800K - 6000K RGBTW: 2200K - 6500K + 16.7millions colours

Brightness Setting: 100% - 10%

Standard Warranty: 3 yrs

Features: Rhythm, Schedule, Room, Grouping, SPACESENSE, APPS control, 2.4GHz and Wi-fi connect

APPS: iOS, Android, PC



FIND THE RIGHT LIGHT

We've created beautiful preset light modes for everyday situations. Or choose from over 16 million colours. With Wiz, finding the one right light is always effortless.



**For informational purposes only. Content is subject to change

* Source: www.wizconnected.com

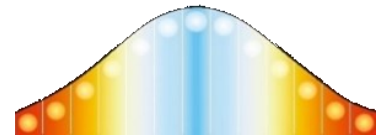


Circadian Spot Lamp

MR16-GU5.3 / AR111-G53

Features :

- Circadian Lighting function
- Tunable White 2800K/3000K/4000K/5000K/ 6000K
- Die-casted with machine cut
- 2.4GHz remote controller or Android Apps



Circadian Lighting



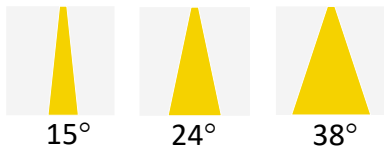
MR16-GU5.3

Input voltage: AC/DC 12V

COB Light source: WW 2800K + CW 6000K

Lamp wattage: 6.8W

Beam Angle: 15° / 24° / 38°



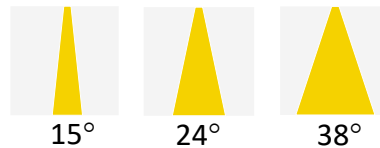
AR111-G53

Input voltage: AC/DC 12V

COB Light source: WW 2800K + CW 6000K

Lamp wattage: 12.5W /18.5W

Beam Angle: 15° / 24° / 38°



AR111 series

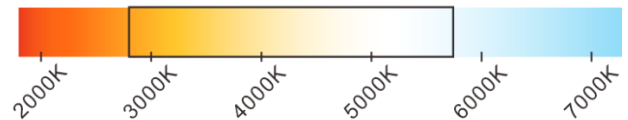
GENERAL SPECIFICATIONS

Gap Base	G53
Working Voltage	12V AC/DC
Halogen Equivalent	50W - 100W
Wattage	13 / 110W
Frequency	50/60Hz (12VAC)
EU RoHS compliant	YES

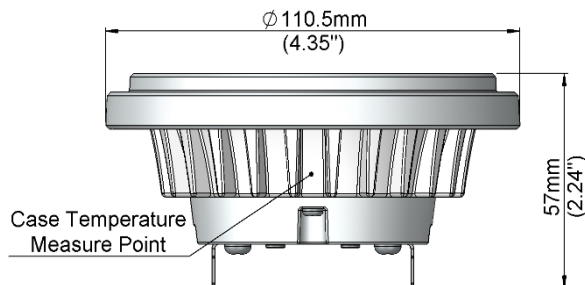
Dimensions	Ø111mm x 57mm H
Weight	280g
Lifetime	35000 hrs - 50000 hrs (nom.)
Switching	50000x
Operation Temp.	70°C (nom.) to 80°C @ Case Temperature
Max. operation temp.	90°C @ Case Temperature

PRODUCT INFORMATION

Colour temp.	2800K - 5700K
CRI	90 (Typ.) CRI 80 and 95 on request
Color Consistency	3 Steps MacAdam @2800K and @5700K
Brightness Setting:	100% ~ 5%
Beam Angle	10° / 15° / 24° / 38° / 10° x 60° / 30° x 60°

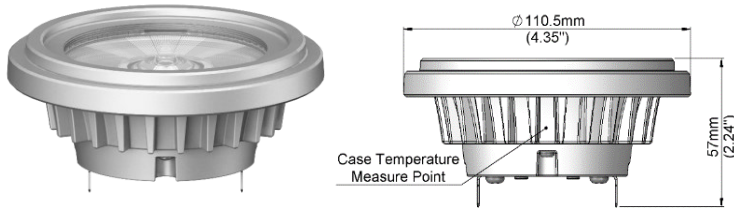


PRODUCT DIMENSIONS



*For informational purposes only. Content is subject to change.

AR111 series



Model No.	Halogen Equivalent	Wattage (W)	Lumen output (lm)*
AR111-18	75 - 100W	110W (Typ.)	925 - 1085 lm
AR111-12	50 - 75W	12W (Typ.)	620 - 700 lm

ORDERING INFORMATION

Example Model : AR111-18-38D-928-957-01

AR111	-	18	-	15D	-	928 - 957	-	02	-	
Product and Lamp Base	-	Wattage (W)	-	Beam angle	-	CCT range	-	Version	-	Voltage (optional)
AR111 For AR111-G53 (12V AC/DC)		18 (Typ. 110W)		10D (10°) 15D (15°)		928 - 957 2800K - 5700K@90 CRI *(CRI 95 on request)		01 Gen.1 RF 2.4GHz		For AR111GU10 only TBC
AR111GU For AR111-GU10 (AC 100 ~ 240V) (coming soon)		13 (Typ. 20W)		24D (24°) 38D (38°) 1060D (10°x60°) 3060D (30°x60°)				02 Wiz connected (coming soon)		

*For informational purposes only. Content is subject to change.

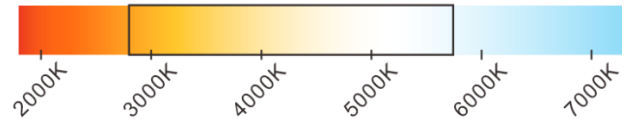
MR16 series

GENERAL SPECIFICATIONS

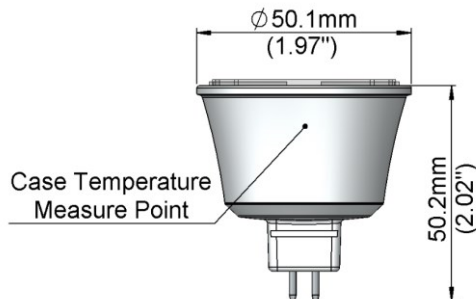
Gap Base	GU-5.3	Dimensions	Ø50.1mm x 50.2mm H
Working Voltage	12V AC/DC	Weight	60g
Halogen Equivalent	35W - 50W	Lifetime	35000 hrs - 50000 hrs (nom.)
Wattage	12 / 110W	Switching	50000x
Frequency	50/60Hz (12VAC)	Operation Temp.	70°C (nom.) to 80°C @ Case Temperature
EU RoHS compliant	YES	Max. operation temp.	90°C @ Case Temperature

PRODUCT INFORMATION

Colour temp.	2800K - 5700K
CRI	90 (Typ.) CRI 80 and 95 on request
Color Consistency	3 Steps MacAdam @2800K and @5700K
Brightness Setting:	100% ~ 5%
Beam Angle	10° / 15° / 24° / 38° / 10° x 60° / 30° x 60°

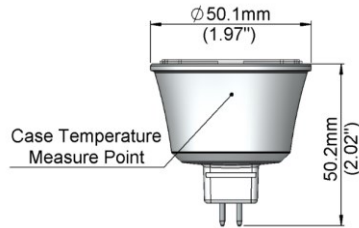


PRODUCT DIMENSIONS



*For informational purposes only. Content is subject to change.

MR16 series



Model No.	Halogen Equivalent	Wattage (W)	Lumen output (lm)*
MR16-07	35 - 50W	6.10W (Typ.)	362 - 424 lm

ORDERING INFORMATION

Example Model : MR16-07-38D-928-957-01

MR16	-	07	-	15D	-	928 - 957	-	02	-	
Product and Lamp Base	-	Wattage (W)	-	Beam angle	-	CCT range	-	Version	-	Voltage (optional)
MR16 For MR16-GU5.3 (12V AC/DC)		07 (Typ. 6.10W)		10D (10°) 15D (15°) 24D (24°)		928 - 957 2800K - 5700K@90 CRI *(95 on request)		01 Gen.1 RF 2.4GHz		For MR16GU10 only TBC
MR16GU For MR16-GU10 (AC 100 ~ 240V) (coming soon)				38D (38°) 1060D (10°x60°) 3060D (30°x60°)				02 Wiz connected (coming soon)		

*For informational purposes only. Content is subject to change.



Connected by

WIZ

Wiz Pro Track Light

Features :

- 3 sizes from 8W to 40W
- Die-cast aluminum with precise machine cut
- Tunable White / RGBCW light COB light source
- Works with Amazon Alexa / Google Assistant / Samsung SmartThings
- Remote control / Wall Dimmer Switches / Sensor accessories available



Tunable White

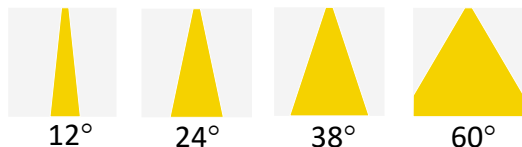


Input voltage: AC100 – 240V

COB Light source: WW 2800K + CW 6000K

Luminaire wattage: 8W / 15W / 20W / 30W / 40W

Beam Angle:



RGBCW (RGB+CCT)

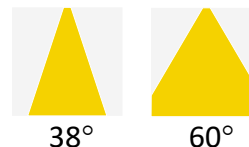


Input voltage: AC100 – 240V

COB Light source: RGB + WW 2700K + CW 6500K

Luminaire wattage: 4.5W / 10W / 15W / 20W

Beam Angle:



Body Colours:



White
(RAL9016)



Black
(RAL9011)

Connected by
WIZ



TLA series



Model No.	Driver box length (mm)	Light engine diameter (mm)	Max. Height (mm)	Max. wattage (W)	Lumen output (lm)*
TLA80	155	∅80	160	10W	690 - 820 lm
TLA105	155	∅105	185	20W	1130 - 1320 lm
TLA130	165	∅130	205	40W	2240 - 2620 lm

Model No.	10W	20W	40W
TLA80	690 - 820 lm	N.A.	N.A.
TLA105	NA	1130 - 1320 lm	N.A.
TLA130	NA	NA	2240 - 2620 lm

*Lumen output at CCT 2800K - 6000K. Data for reference only.

ORDERING INFORMATION

Example Model : TLA105-20-WT-WTSS-60D-928-960

TLA	105 - 20	-	WT	-	WT	-	24D	-	928 - 960	-	2P		
Series	Light engine diameter	-	Wattage	-	Driver box colour	-	Body colour	-	Beam angle	-	LED colour	-	Track adapter
TLA	80 - 10 (∅80mm, 10W)		WT White		WT White		12D (12°)		TW Tunable white 2800K - 6000K @90 CRI		2P (2 poles track adapter)		
	105 - 20 (∅105mm, 20W)		BK Black		BK Black		24D (24°)		RGBCW RGB + CW=6500K + WW=2700K *(coming soon)		3P (3 poles track adapter)		
	130 - 40 (∅130mm, 40W)						38D (38°)						
							60D (60°)						

*For informational purposes only. Content is subject to change.

Connected by

WIZ

Wiz Pro Track Light
Magnetic Track Light / Track Light

Features :

- 3 sizes from 5W to 15W
- CNC precise machine cut
- Tunable White / RGBCW light COB light source
- Works with Amazon Alexa / Google Assistant / Samsung SmartThings
- Works with Remote control / Wall Dimmer Switches / Sensor



Magnetic Track Light - MLU series



Track Light - TLU series

Tunable White



Input voltage: DC48V (Magnetic Track Light)

AC100 – 240V (Track Light)

COB Light source: WW 2800K + CW 6000K

Luminaire wattage: 5W / 10W / 15W (3 Sizes)

Beam Angle: °



12°

24°

38°

60°

Body Colours:



Matt White
RAL9016



Matt Black
RAL9011



Gilt Plated



Chrome
Plated



Walnut
Wood



Cherry
Wood

RGBCW (RGB+CCT)



Input voltage: DC48V (Magnetic Track Light)

AC100 – 240V (Track Light)

COB Light source: RGB + WW 2700K + CW 6500K

Luminaire wattage: 4.5W / 10W / 15W (3 sizes)

Beam Angle:



24°

38°

60°



Accessory:
Honeycomb louver

Connected by
WIZ



TLC series



Model No.	Driver box length	Light engine diameter	Max. Height (mm)	Max. wattage (W)	Lumen output (lm)*
TLU80	155	Ø80	160	5W	300 - 360 lm
TLU105	155	Ø105	185	10W	610 - 730 lm
TLU130	155	Ø130	205	15W	920 - 1100 lm

Model No.	5W	10W	15W
TLU80	300 - 360 lm	N.A.	N.A.
TLU105	NA	610 - 730 lm	N.A.
TLU130	NA	NA	920 - 1100 lm

*Lumen output at CCT 2800K - 6000K. Data for reference only.

ORDERING INFORMATION

Example Model : TLU105-12-BK-GP-24D-TW-2P

TLU	105 - 12		-	WT - CP		-	24D	-	TW	-	2P
Series	Light engine diameter	Wattage	-	Driver box colour	Body colour	-	Beam angle	-	CCT range	-	Track adapter
TLU	80 - 08	(Ø80mm, 10W)		WT	WT		12D (12°)		TW		2P (2 poles track adapter)
	105 - 12	(Ø105mm, 12W)		White	Matt White		24D (24°)		Tunable white 2800K - 6000K Typ. 90 CRI		3P (3 poles track adapter)
	130 - 18	(Ø130mm, 20W)	BK	BK	38D (38°)	RGBTW RGB + CW=6500K + WW=2700K TW Typ.90CRI					
			Black	Matt Black	60D (60°)						
				CR	Chrome Plated						
				GP	Glit Plated						
	WW	Walnuts Wood									
	CW	Cherry Wood									

*For informational purposes only. Content is subject to change.

MLC series



Model No.	Driver box length	Light engine diameter	Max. Height (mm)	Max. wattage (W)	Lumen output (lm)*
MLU80	115	Ø80	115	5W	300 - 360 lm
MLU105	115	Ø105	140	10W	610 - 730 lm
MLU130	115	Ø130	155	15W	920 - 1100 lm

Model No.	5W	10W	15W
MLU80	300 - 360 lm	N.A.	N.A.
MLU105	NA	610 - 730 lm	N.A.
MLU130	NA	NA	920 - 1100 lm

*Lumen output at CCT 2800K - 6000K. Data for reference only.

ORDERING INFORMATION

Example Model : TLU105-12-BK-GP-24D-TW-2P

MLU	105 - 12	-	WT - CP	-	24D	-	TW				
Series	Light engine diameter	-	Wattage	-	Driver box colour	-	Body colour	-	Beam angle	-	CCT range
MLU	80 - 08 (Ø80mm, 10W)				WT White		WT Matt White		12D (12°)		TW Tunable white 2800K - 6000K Typ. 90 CRI
	105 - 12 (Ø105mm, 12W)				BK Black		BK Matt Black		24D (24°)		
	130 - 18 (Ø130mm, 20W)						CR Chrome Plated		38D (38°)		RGBTW RGB + CW=6500K + WW=2700K TW Typ.90CRI
							GP Glit Plated		60D (60°)		
							WW Walnuts Wood				
							CW Cherry Wood				

*For informational purposes only. Content is subject to change.



CIRCAMAN™
HUMAN CENTRIC LIGHTING

Connected by

WIZ

**Wiz Pro
Zoomable Track Light**



Features :

- Die-casted housing with CNC precise machine cut
- Tunable White / RGBCW (coming soon) light COB light source
- Works with Amazon Alexa / Google Assistant / Samsung SmartThings
- Works with Remote control / Wall Dimmer Switches / Sensor

Tunable White

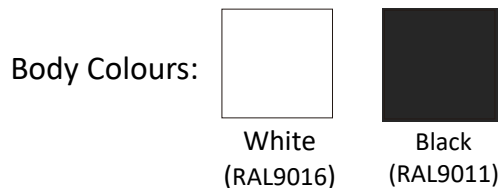


Input voltage: AC220V

COB Light source: WW 2800K + CW 6000K

Luminaire wattage: 13W

Beam Angle: 15° - 60°



www.circadian.com
contact@circadian-lighting.com

TLT series



Model No.	Outer dimension (mm)	Height (mm)	Max. wattage (W)	Lumen output (lm)*
TLT70	Ø71	127	20W	730 - 850 lm

*Lumen output at CCT 2800K - 6000K. Data for reference only.

ORDERING INFORMATION

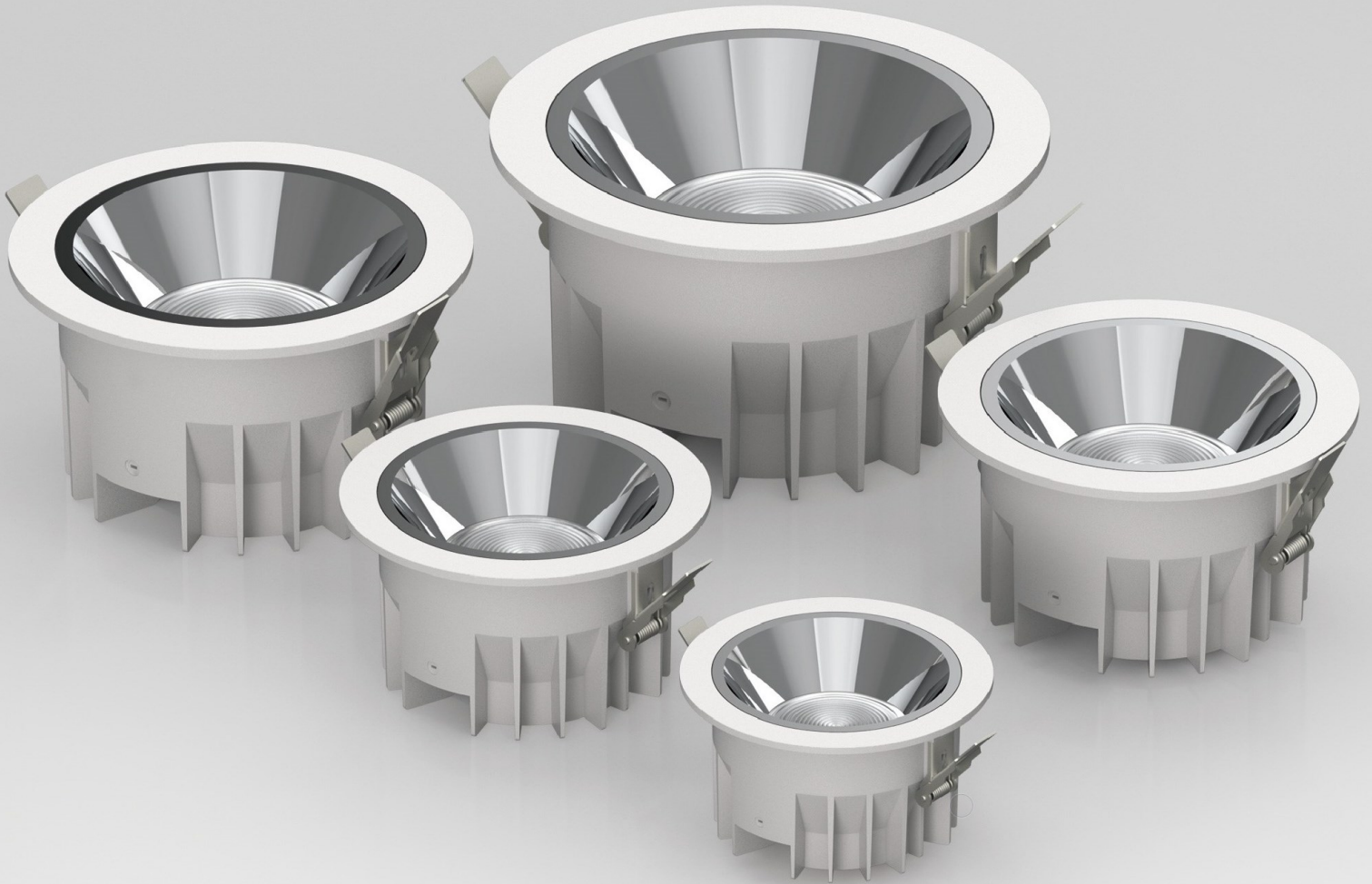
Example Model : TLT70-15-WT-BK-1550D-TW-2P

TLT	70	-	13	-	WT	-	WT	-	15D-50D	-	TW	-	2P
Series	Outer diameter	-	Wattage	-	Driver box colour	-	Body colour	-	Beam angle	-	CCT range	-	Track adapter
TLT	70 (71mm)		13		WT White BK Black	-	WT White BK Black		15D-50D (15° - 50°)		TW Tunable white 2800K - 6000K @90 CRI *(CRI 80 / 95 on request)		2P (2 poles track adapter) 3P (3 poles track adapter)

*For informational purposes only. Content is subject to change.

RECESSED DOWNLIGHT

RDE series



Connected by

WIZ

RDE series



Model No.	Ceiling cut-out (mm)	Outer diameter (mm)	Height (mm)	Max. wattage (W)	Lumen output (lm)*
RDE100	Ø100 - 105	Ø115	65	10W	570 - 660 lm
RDE125	Ø125 - 130	Ø140	80	20W	1130 - 1320 lm
RDE145	Ø145 - 150	Ø160	85	30W	1690 - 1980 lm
RDE180	Ø180 - 190	Ø198	98	30W	1740 - 2030 lm
RDE215	Ø215 - 220	Ø230	102	40W	2240 - 2620 lm

Lumen output with different wattage PSU (Power supply unit)

Model No.	10W	14W	20W	30W	40W
RDE100	565 - 660 lm	N.A.	N.A.	N.A.	N.A.
RDE125	640 - 750 lm	750 - 875 lm	1130 - 1320 lm	N.A.	N.A.
RDE145	660 - 770 lm	765 - 890 lm	1235 - 1445 lm	1695 - 1980 lm	N.A.
RDE180	665 - 780 lm	770 - 895 lm	1240 - 1450 lm	1720 - 2035 lm	N.A.
RDE215	670 - 790 lm	780 - 900 lm	1270 - 1485 lm	1790 - 2095 lm	2240 - 2620 lm

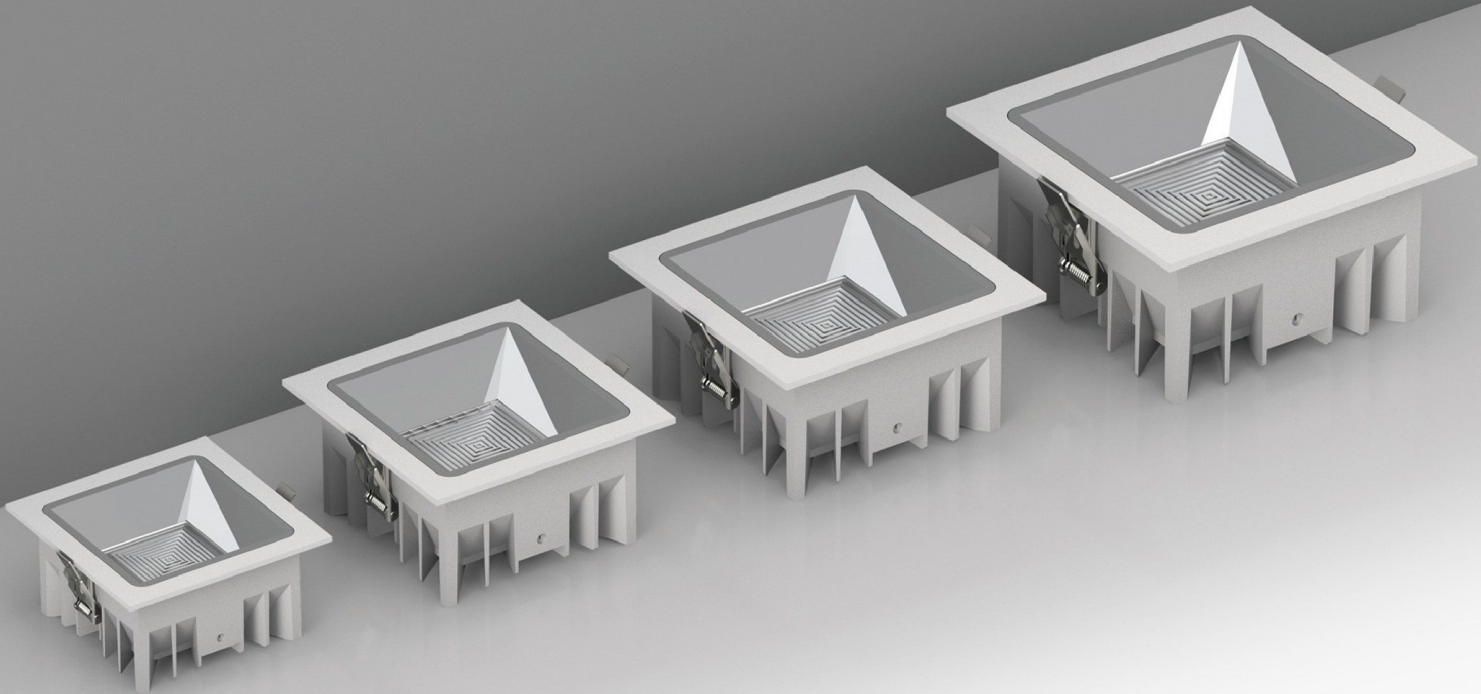
*Lumen output at CCT 2800K - 6000K. Data for reference only.

ORDERING INFORMATION

Example Model : RDE100-10-WT-SS-60D-TW

RDE	100	-	14	-	WT	-	SS	-	60D	-	TW
Series	Ceiling cut-out	-	Wattage	-	Body colour	-	Reflector colour	-	Beam angle	-	CCT range
RDE	100 (Ø100-105mm)		10 (10W)		WT White		SS Specular Silver		60D (60°)		TW Tunable white 2800K - 6000K@90 CRI *(CRI 80 / 95 on request)
	125 (Ø125-130mm)		14 (14W)			DG Dark Gold					
	145 (Ø145-150mm)		20 (20W)								
	180 (Ø180-190mm)		30 (30W)								
	215 (Ø215-220mm)		40 (40W)								
											RGBTW RGB + CW=6500K + WW=2700K Typ.90CRI (*Max.20W On request)

*For informational purposes only. Content is subject to change.



RDF series



Model No.	Ceiling cut-out (mm)	Outer dimension (mm)	Height (mm)	Max. wattage (W)	Lumen output (lm)*
RDF100	□100 - 105	□115	60	10W	565 - 660 lm
RDF125	□125 - 130	□140	75	20W	1130 - 1320 lm
RDF145	□145 - 140	□160	80	30W	1705 - 1995 lm
RDF180	□180 - 185	□198	95	40W	2220 - 2600 lm

Lumen output with different wattage PSU (Power supply unit)

Model No.	10W	14W	20W	30W	40W
RDF100	565 - 660 lm	N.A.	N.A.	N.A.	N.A.
RDF125	640 - 750 lm	750 - 875 lm	1130 - 1320 lm	N.A.	N.A.
RDF145	660 - 775 lm	765 - 890 lm	1235 - 1445 lm	1705 - 1995 lm	N.A.
RDF180	670 - 785 lm	770 - 895 lm	1240 - 1450 lm	1720 - 2035 lm	2220 - 2600 lm

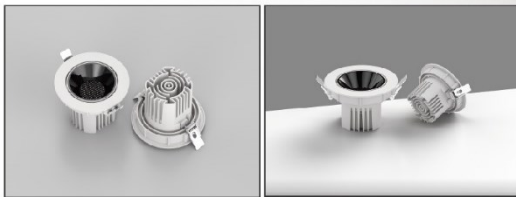
*Lumen output at CCT 2800K - 6000K. Data for reference only.

ORDERING INFORMATION

Example Model : RDF100-108-WT-SS-60D-TW

RDF	100	-	10	-	WT	-	SS	-	60D	-	TW
Series	Ceiling cut-out	-	Wattage	-	Body colour	-	Reflector colour	-	Beam angle	-	CCT range
RDF	100 (□100-105mm)		10 (10W)		WT White		SS Specular Silver		60D (60°)		TW Tunable white 2800K - 6000K@90 CRI *(CRI 80 / 95 on request)
	125 (□125-130mm)		14 (14W)				DG Dark Gold				RGBTW RGB + CW=6500K + WW=2700K Typ.90CRI (*Max.20W On request)
	145 (□145-150mm)		20 (20W)								
	180 (□180-190mm)		30 (30W)								
			40 (40W)								

*For informational purposes only. Content is subject to change.



Connected by

WiZ

HUMAN CENTRIC LIGHTING

RDT series (Fixed)



Model No.	Ceiling cut-out (mm)	Outer diameter (mm)	Height (mm)	Max. wattage (W)	Lumen output (lm)*
RDT75A	Ø75-80	Ø90	70	10W	500 - 585 lm
RDT95A	Ø95-100	Ø108	85	20W	1090 - 1280 lm
RDT125A	Ø125-130	Ø135	97	30W	1640 - 1920 lm

Lumen output with different wattage PSU (Power supply unit)

Model No.	10W	14W	20W	30W
RDT75A	500 - 585 lm	N.A.	N.A.	N.A.
RDT95A	620 - 727 lm	840 - 985 lm	1090 - 1280 lm	N.A.
RDT125A	640 - 750 lm	925 - 1080 lm	1200 - 1400 lm	1640 - 1920 lm

*Lumen output at CCT 2800K - 6000K. Data for reference only.

ORDERING INFORMATION

Example Model : RDT95A-20-WT-WT-38D-TW

RDT	95A	-	10	-	WT	-	WT	-	38D	-	TW
Series	Ceiling cut-out	-	Wattage	-	Body colour	-	Reflector colour	-	Beam angle	-	CCT range
RDT	75A (Ø75-80mm)		10 (10W)		WT White		WT White		15D (15°)		TW Tunable white 2800K - 6000K@90 CRI *(CRI 80 / 95 on request)
	95A (Ø95-100mm)		14 (14W)				BK Black		24D (24°)		
	125A (Ø125-130mm)		20 (20W)						38D (38°)		
			30 (30W)						60D (60°)		RGBTW RGB + CW=6500K + WW=2700K Typ.90CRI (*Max.20W On request)

*For informational purposes only. Content is subject to change.

RECESSED DOWNLIGHT
RDT-A series - P.27

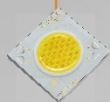
WALL WASHER DOWNLIGHT
RDT-C series - P.35



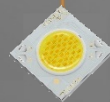
Fixed or Gimbal

Wall-washer

Dual colour
COB LED



Dual colour COB
LED



Lens with different beam angle



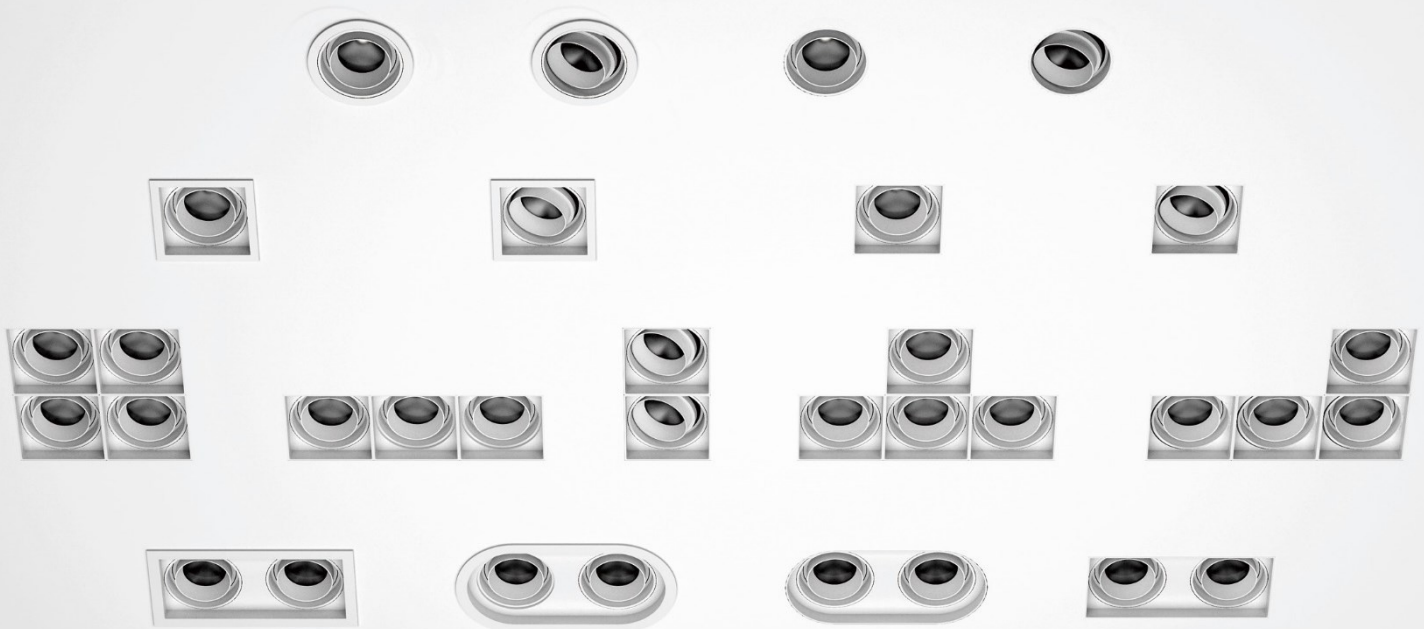
Polarized Specular
Reflector

Interchangeable
Reflector



GIMBAL DOWNLIGHT

RDS series



Connected by

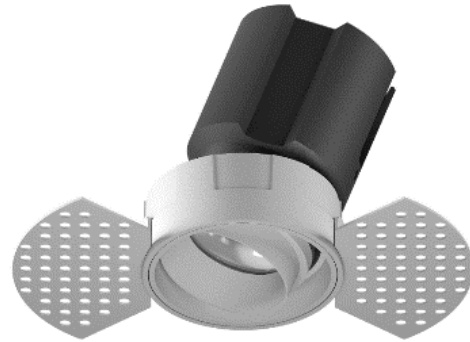
WIZ

GIMBAL DOWNLIGHT

RDS-1 series



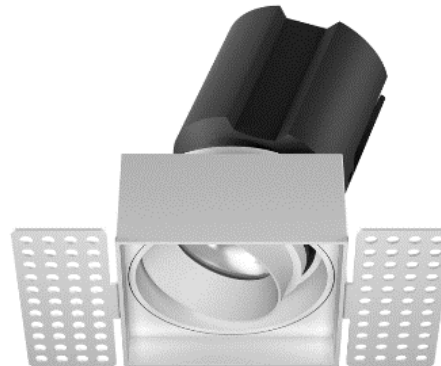
RDS-1RF



RDS-1RL



RDS-1QF



RDS-1QL

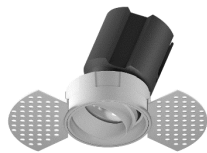
Connected by

WIZ

RDS-1RF / 1RL / 1QF / 1QL series



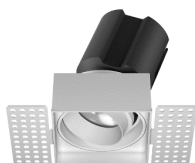
RDS-1RF



RDS-1RL



RDS-1QF



RDS-1QL

Model No.	Ceiling cut-out (mm)	Outer flange (mm)	Height (mm)	Max. wattage (W)	Lumen output (lm)*
RDS75-1RF	Ø75	Ø84	100	10W	500 - 590 lm
RDS95-1RF	Ø95	Ø110	128	20W	1130 - 1320 lm
RDS75-1RL	Ø77	N/A	100	10W	500 - 590 lm
RDS95-1RL	Ø97	N/A	128	20W	1130 - 1320 lm
RDS75-1QF	□75	□84.5	116	10W	500 - 590 lm
RDS95-1QF	□95	□104.5	144	20W	1130 - 1320 lm
RDS75-1QL	□77	N/A	116	10W	500 - 590 lm
RDS95-1QL	□97	N/A	144	20W	1130 - 1320 lm

ORDERING INFORMATION

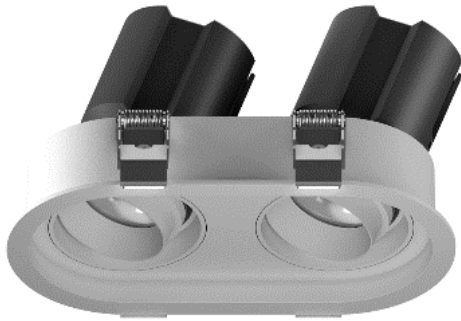
Example Model: RDS95-20-WT-WT-38D-TW-1RF

LED Light-Engine Information									Mounting Information				
RDS	95	-	20	-	WT	-	WT	-	38D	-	TW	-	1RF
Series	Light Engine Size	-	Wattage	-	Body colour	-	Reflector colour	-	Beam angle	-	CCT range	-	Mounting Type
RDS	75	-	10 (10W)		WT White		WT White		15D (15°) 24D (24°) 38D (38°) 60D (60°)		TW 2800K-5700K @90 CRI *(CRI 80 / 95 on request) RGBTW RGB + CW=6500K + WW=2700K Typ.90CRI (*Max.20W on request)		1RF (1 light-engine, rounded mounting with flange) 1RL (1 light-engine, rounded mounting with flangeless) 1QF (1 light-engine, square mounting with flange) 1QL (1 light-engine, square flangeless mounting)

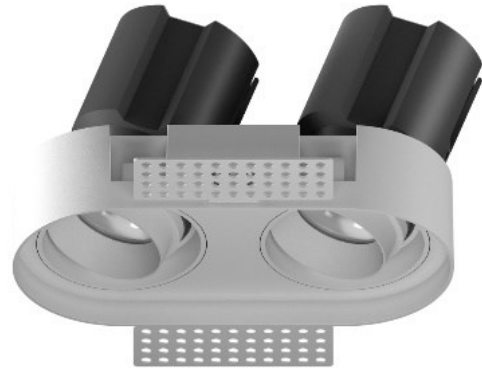
*For informational purposes only. Content is subject to change.

GIMBAL DOWNLIGHT

RDS-2 series



RDS-2RF



RDS-2RL



RDS-2QF



RDS-2QL

Connected by

WIZ



RDS-2RF



RDS-2RL



RDS-2QF



RDS-2QL

Model No.	Ceiling cut-out (mm)	Outer flange (mm)	Height (mm)	Max. wattage (W)	Lumen output (lm)*
RDS75-2RF	177.5 x 88	193.8 x 104.3	112	2 x 10W	1000 - 1180 lm
RDS95-2RF	223 x 109	238.5 x 124.5	139	2 x 20W	2260 - 2640 lm
RDS75-2RL	180 x 90.5	N/A	112	2 x 10W	1000 - 1180 lm
RDS95-2RL	225 x 111	N/A	139	2 x 20W	2260 - 2640 lm
RDS75-2QF	164 x 77	180 x 90.5	112	2 x 10W	1000 - 1180 lm
RDS95-2QF	207 x 95	223.5 x 109.5	139	2 x 20W	2260 - 2640 lm
RDS75-2QL	166.5 x 79.5	N/A	112	2 x 10W	1000 - 1180 lm
RDS95-2QL	209 x 97	N/A	139	2 x 20W	2260 - 2640 lm

ORDERING INFORMATION

Example Model : RDS95-20-WT-WT-38D-TW-2RF

LED Light-Engine Information										Mounting Information			
RDS	95	-	20	-	WT	-	WT	-	38D	-	TW	-	2RF
Series	Light Engine Size	-	Wattage	-	Body colour	-	Reflector colour	-	Beam angle	-	CCT range	-	Mounting Type
RDS	75	-	10 (10W)		WT White		WT White		15D (15°) 24D (24°) 38D (38°) 60D (60°)		TW 2800K-5700K @90 CRI *(CRI 80 / 95 on request)		2RF (2 light-engine, rounded mounting with flange) 2RL (2 light-engine, rounded mounting with flangeless) 2QF (2 light-engine, square mounting with flange) 2QL (2 light-engine, square flangeless mounting)
	95	-	20 (20W)								RGBTW RGB + CW=6500K + WW=2700K Typ.90CRI (*Max.20W on request)		

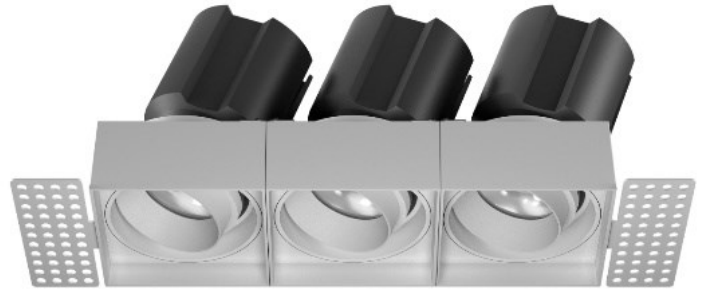
*For informational purposes only. Content is subject to change.

GIMBAL DOWNLIGHT

RDS-3 / RDS-4 series



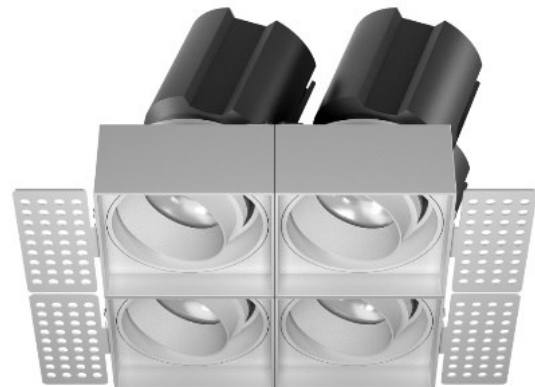
RDS-3RF



RDS-3RL



RDS-4QF



RDS-4QL

Connected by

WIZ

RDS-3QF / 3QL / 4QF / 4QL series



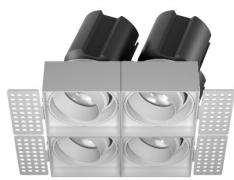
RDS-3QF



RDS-3QL



RDS-4QF



RDS-4QL

Model No.	Ceiling cut-out (mm)	Outer flange (mm)	Height (mm) 高度	Max. wattage (W) 最大瓦數	Lumen output (lm)* 輸出流明
RDS75-3QF	222 x 75	231.5 x 84.5	112	3 x 10W	1500 - 1770 lm
RDS95-3QF	284 x 95	293.5 x 104.5	143	3 x 20W	3390 - 3960 lm
RDS75-3QL	224.5 x 77	N/A	112	3 x 10W	1500 - 1770 lm
RDS95-3QL	287 x 97	N/A	143	3 x 20W	3390 - 3960 lm
RDS75-4QF	□150	□158	112	4 x 10W	2000 - 2360 lm
RDS95-4QF	□190	□198	143	4 x 20W	4520 - 5280 lm
RDS75-4QL	□152.5	N/A	112	4 x 10W	2000 - 2360 lm
RDS95-4QL	□192	N/A	143	4 x 20W	4520 - 5280 lm

ORDERING INFORMATION

Example Model : RDS95-20-WT-WT-38D-TW-3RF

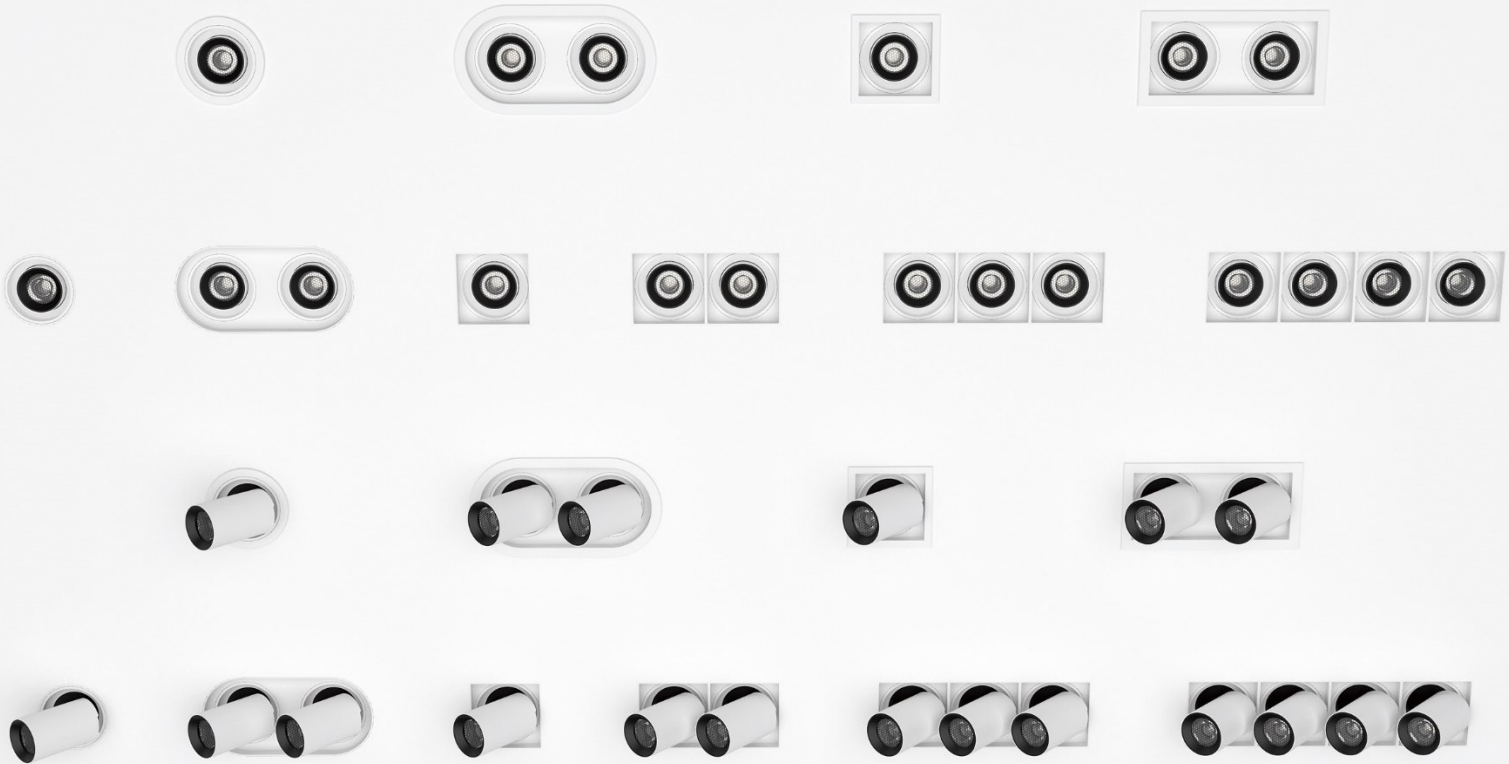
LED Light-Engine Information										Mounting Information			
RDS	95	-	20	-	WT	-	WT	-	38D	-	TW	-	3RF
Series	Light Engine Size	-	Wattage	-	Body colour	-	Reflector colour	-	Beam angle	-	CCT range		Mounting Type
RDS	75	-	10 (10W)		WT White		WT White		15D (15°) 24D (24°) 38D (38°) 60D (60°)		TW 2800K-5700K @90 CRI *(CRI 80 / 95 on request)		3QF (3 light-engines, rounded mounting with flange) 3QL (3 light-engine, rounded mounting with flangeless) 4QF (4 light-engines, rounded mounting with flange) 4QL (4 light-engine, rounded mounting with flangeless)

*For informational purposes only. Content is subject to change.



GIMBAL DOWNLIGHT (EXTENDABLE)

RDV series



Connected by

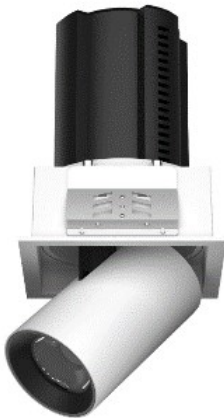
WIZ



RDV-1RF



RDV-1RL



RDV-1QF



RDV-1QL

RDV-1RF / 1RL / 1QF / 1QL series



RDV-1RF



RDV-1RL



RDV-1QF



RDV-1QL

Model No.	Ceiling cut-out (mm)	Outer flange (mm)	Height (mm)	Max. wattage (W)	Lumen output (lm)*
RDV75-1RF	Ø75	Ø84	104	10W	500 - 590 lm
RDV95-1RF	Ø95	Ø110	127	20W	1130 - 1320 lm
RDV75-1RL	Ø77	N/A	104	10W	500 - 590 lm
RDV95-1RL	Ø97	N/A	127	20W	1130 - 1320 lm
RDV75-1QF	□75	□84.5	116	10W	500 - 590 lm
RDV95-1QF	□95	□104.5	144	20W	1130 - 1320 lm
RDV75-1QL	□77	N/A	116	10W	500 - 590 lm
RDV95-1QL	□97	N/A	144	20W	1130 - 1320 lm

ORDERING INFORMATION

Example Model : RDV95-20-WT-WT-38D-TW-1RF

LED Light-Engine Information										Mounting Information			
RDV	95	-	20	-	WT	-	WT	-	38D	-	TW	-	1RF
Series	Light Engine Size	-	Wattage	-	Body colour	-	Reflector colour	-	Beam angle	-	CCT range	-	Mounting Type
RDV	75 95	- -	10 (10W) 20 (20W)		WT White		WT White		15D (15°) 24D (24°) 38D (38°) 60D (60°)		TW 2800K-5700K @90 CRI *(CRI 80 / 95 on request) RGBTW RGB + CW=6500K + WW=2700K Typ.90CRI (*Max.20W on request)		1RF (1 light-engine, rounded mounting with flange) 1RL (1 light-engine, rounded mounting with flangeless) 1QF (1 light-engine, square mounting with flange) 1QL (1 light-engine, square flangeless mounting)

*For informational purposes only. Content is subject to change.



RDV-2RF



RDV-2RL



RDV-2QF



RDV-2QL



RDV-2RF



RDV-2RL



RDV-2QF



RDV-2QL

Model No.	Ceiling cut-out (mm)	Outer flange (mm)	Height (mm)	Max. wattage (W)	Lumen output (lm)*
RDV75-2RF	177.5 x 88	193.8 x 104.3	116	2 x 10W	1000 - 1180 lm
RDV95-2RF	223 x 109	238.5 x 124.5	144	2 x 20W	2260 - 2640 lm
RDV75-2RL	180 x 90.5	N/A	116	2 x 10W	1000 - 1180 lm
RDV95-2RL	225 x 111	N/A	144	2 x 20W	2260 - 2640 lm
RDV75-2QF	164 x 77	180 x 90.5	116	2 x 10W	1000 - 1180 lm
RDV95-2QF	207 x 95	223.5 x 109.5	144	2 x 20W	2260 - 2640 lm
RDV75-2QL	166.5 x 79.5	N/A	116	2 x 10W	1000 - 1180 lm
RDV95-2QL	209 x 97	N/A	144	2 x 20W	2260 - 2640 lm

ORDERING INFORMATION

Example Model : RDV95-20-WT-WT-38D-TW-2RF

LED Light-Engine Information										Mounting Information			
RDV	95	-	20	-	WT	-	WT	-	38D	-	TW	-	2RF
Series	Light Engine Size	-	Wattage	-	Body colour	-	Reflector colour	-	Beam angle	-	CCT range	-	Mounting Type
RDV	75	-	10 (10W)	-	WT White	-	WT White	-	15D (15°) 24D (24°) 38D (38°) 60D (60°)	-	TW 2800K-5700K @90 CRI *(CRI 80 / 95 on request) RGBTW RGB + CW=6500K + WW=2700K Typ.90CRI (*Max.20W on request)	-	2RF (2 light-engine, rounded mounting with flange) 2RL (2 light-engine, rounded mounting with flangeless) 2QF (2 light-engine, square mounting with flange) 2QL (2 light-engine, square flangeless mounting)

*For informational purposes only. Content is subject to change.

GIMBAL DOWNLIGHT (EXTENDABLE)

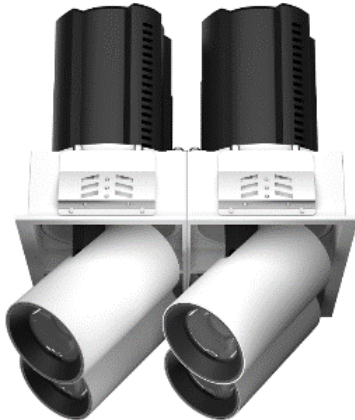
RDV-3 / RDV-4 series



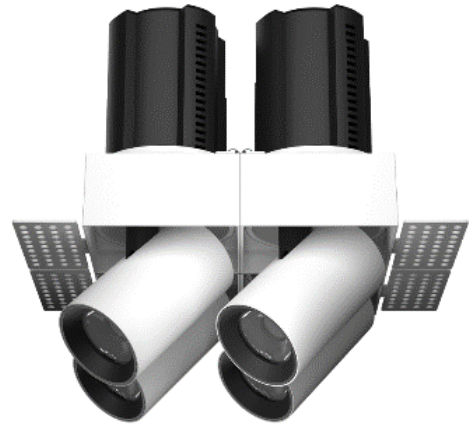
RDV-3RF



RDV-3RL



RDV-4QF



RDV-4QL

Connected by

WIZ

RDV-3QF / 3QL / 4QF / 4QL series



RDV-3QF



RDV-3QL



RDV-4QF



RDV-4QL

Model No.	Ceiling cut-out (mm)	Outer flange (mm)	Height (mm)	Max. wattage (W)	Lumen output (lm)*
RDV75-3QF	222 x 75	231.5 x 84.5	116	3 x 10W	1500 - 1770 lm
RDV95-3QF	284 x 95	293.5 x 104.5	144	3 x 20W	3390 - 3960 lm
RDV75-3QL	224.5 x 77	N/A	116	3 x 10W	1500 - 1770 lm
RDV95-3QL	287 x 97	N/A	144	3 x 20W	3390 - 3960 lm
RDV75-4QF	□150	□158	116	4 x 10W	2000 - 2360 lm
RDV95-4QF	□190	□198	144	4 x 20W	4520 - 5280 lm
RDV75-4QL	□152.5	N/A	116	4 x 10W	2000 - 2360 lm
RDV95-4QL	□192	N/A	144	4 x 20W	4520 - 5280 lm

ORDERING INFORMATION

Example Model : RDV95-20-WT-WT-38D-TW-3RF

LED Light-Engine Information										Mounting Information			
RDV	95	-	13	-	WT	-	WT	-	38D	-	TW	-	3RF
Series	Light Engine Size	-	Wattage	-	Body colour	-	Reflector colour	-	Beam angle	-	CCT range	-	Mounting Type
RDV	75	-	10 (10W)		WT		WT		15D (15°)		TW		3QF (3 light-engines, rounded mounting with flange)
	95	-	20 (20W)		White		White		24D (24°)		2800K-5700K @90 CRI *(CRI 80 / 95 on request)		3QL (3 light-engine, rounded mounting with flangeless)
									38D (38°)		RGBTW		4QF (4 light-engines, rounded mounting with flange)
									60D (60°)		RGB + CW=6500K + WW=2700K Typ.90CRI (*Max.20W on request)		4QL (4 light-engine, rounded mounting with flangeless)

*For informational purposes only. Content is subject to change.

GIMBAL DOWN LIGHT

RDJ series



Connected by

WIZ

RDJ series



Model No.	Ceiling cut-out (mm)	Outer diameter (mm)	Height (mm)	Max. wattage (W)	Lumen output (lm)*
RDJ100	Ø100 - 105	Ø114	80	10W	505 - 590 lm
RDJ125	Ø125 - 130	Ø138	120	20W	735 - 860 lm
RDJ150	Ø150 - 155	Ø165	145	30W	1640 - 1920 lm

Lumen output with different wattage PSU (Power supply unit)

Model No.	10W	14W	20W	30W
RDJ100	630 - 740 lm	N.A.	N.A.	N.A.
RDJ125	660 - 770 lm	940 - 1100 lm	1220 - 1430 lm	N.A.
RDJ150	665 - 775 lm	945 - 1105 lm	1270 - 1485 lm	1640 - 1920 lm

*Lumen output at CCT 2800K - 6000K. Data for reference only.

ORDERING INFORMATION

Example Model : RDJ100-10-WT-WT-38D-TW

RDJ	100	-	10	-	WT	-	WT	-	38D	-	TW
Series	Ceiling cut-out	-	Wattage	-	Body colour	-	Reflector colour	-	Beam angle	-	CCT range
RDJ	100 (Ø100-105mm)		10 (10W)		WT White		WT White		15D (15°)		TW 2800K - 6000K@90 CRI *(CRI 80 / 95 on request)
	125 (Ø125-130mm)		14 (14W)						23D (23°)		
	150 (Ø150-155mm)		20 (20W)						38D (38°)		RGBTW RGB + CW=6500K + WW=2700K Typ.90CRI (*Max.20W on request)
			30 (30W)								

*For informational purposes only. Content is subject to change.



RDT series



Model No.	Ceiling cut-out (mm)	Outer diameter (mm)	Height (mm)	Max. wattage (W)	Lumen output (lm)*
RDT125B	Ø125 - 130	Ø138	85	20W	1090 - 1280 lm
RDT150B	Ø150 - 155	Ø163	97	30W	1640 - 1920 lm

Lumen output with different wattage PSU (Power supply unit)

Model No.	10W	14W	20W	30W
RDT125B	495 - 580 lm	750 - 900 lm	1090 - 1280 lm	N.A.
RDT150B	520 - 605 lm	780 - 930 lm	1115 - 1300 lm	1640 - 1920 lm

*Lumen output at CCT 2800K - 6000K. Data for reference only.

ORDERING INFORMATION

Example Model : RDT150-20-WT-WT-38D-TW

RDT	150	-	13	-	WT	-	WT	-	38D	-	TW
Series	Ceiling cut-out	-	Wattage	-	Body colour	-	Reflector colour	-	Beam angle	-	CCT range
RDT	125B (Ø125-130mm) 150B (Ø150-155mm)		10 (10W) 14 (14W) 20 (20W) 30 (30W)		WT White		WT White BK Black		15D (15°) 24D (24°) 38D (38°) 60D (60°)		TW 2800K - 6000K@90 CRI *(CRI 80 / 95 on request) RGBTW RGB + CW=6500K + WW=2700K Typ.90CRI (*Max.20W on request)

*For informational purposes only. Content is subject to change.

WALL WASHER DOWN LIGHT

RDT-C series



Connected by

WIZ

RDT-C series



Model No.	Ceiling cut-out (mm) 開孔直徑	Outer diameter (mm) 外徑	Height (mm) 高度	Max. wattage (W) 最大瓦數	Lumen output (lm)* 輸出流明
RDT75C	Ø75 - 80	Ø90	70	10W	400 - 570 lm
RDT95C	Ø95 - 100	Ø108	85	20W	710 - 830 lm
RDT125C	Ø125 - 130	Ø135	97	30W	1640 - 1920 lm

Lumen output with different wattage PSU (Power supply unit)

Model No.	10W	14W	20W	30W
RDT75C	470 - 540 lm	N.A.	N.A.	
RDT95C	495 - 580 lm	750 - 900 lm	1090 - 1280 lm	N.A.
RDT125C	525 - 605 lm	780 - 930 lm	1115 - 1300 lm	1640 - 1920 lm

*Lumen output at CCT 2800K - 6000K. Data for reference only.

ORDERING INFORMATION

Example Model : RDT95C-20-WT-SS-38D-TW

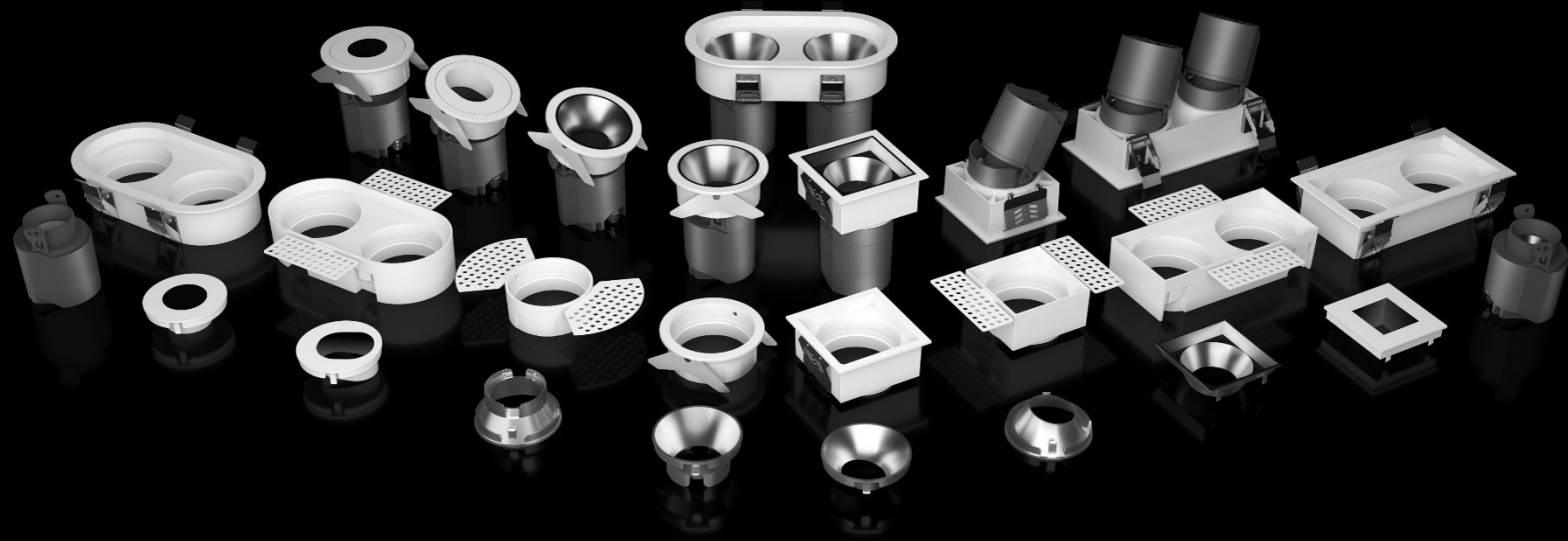
Series	Ceiling cut-out	Wattage	Body colour	Reflector colour	Beam angle	CCT range
RDT	75C (Ø75-80mm) 95C (Ø95-100mm) 125C (Ø125-130mm)	10 (10W) 14 (14W) 20 (20W) 30 (30W)	WT White	SS Specular Silver	15D (15°) 24D (24°) 38D (38°) 60D (60°) (All asymmetric 10°)	TW 2800K - 6000K@90 CRI *(CRI 80 / 95 on request) RGBTW RGB + CW=6500K + WW=2700K Typ.90CRI (*Max.20W on request)

*For informational purposes only. Content is subject to change.



WALL WASHER DOWNLIGHT

RDW series



Connected by

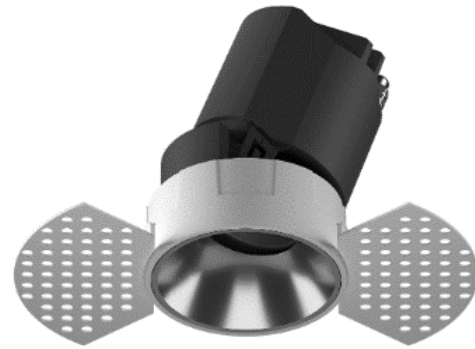
WiZ

WALL WASHER DOWNLIGHT

RDW-1 series



RDW-1RF



RDW-1RL



RDW-1QF



RDW-1QL

Connected by

WIZ



RDW-1RF



RDW-1RL



RDW-1QF



RDW-1QL

Model No.	Ceiling cut-out (mm)	Outer flange (mm)	Height (mm)	Max. wattage (W)	Lumen output (lm)*
RDW75-1RF	Ø75	Ø84	112	10W	500 - 590 lm
RDW95-1RF	Ø95	Ø110	138	20W	1130 - 1320 lm
RDW75-1RL	Ø77	N/A	112	10W	500 - 590 lm
RDW95-1RL	Ø97	N/A	138	20W	1130 - 1320 lm
RDW75-1QF	Ø75	Ø84	101	10W	500 - 590 lm
RDW95-1QF	Ø95	Ø110	122	20W	1130 - 1320 lm
RDW75-1QL	Ø77	N/A	101	10W	500 - 590 lm
RDW95-1QL	Ø97	N/A	122	20W	1130 - 1320 lm

ORDERING INFORMATION

Example Model : RDW95-20-WT-WT-38D-TW-1RF

LED Light-Engine Information										Mounting Information			
RDW	95	-	20	-	WT	-	WT	-	38D	-	TW	-	1RF
Series	Light Engine Size	-	Wattage	-	Body colour	-	Reflector colour	-	Beam angle	-	CCT range	-	Mounting Type
RDW	75	-	10 (10W)		WT White		WT White		15D (15°) 24D (24°) 38D (38°) 60D (60°)		TW 2800K - 6000K@90 CRI *(CRI 80 / 95 on request) RGBTW RGB + CW=6500K + WW=2700K Typ.90CRI (*Max.20W on request)		1RF (1 light-engine, rounded mounting with flange) 1RL (1 light-engine, rounded mounting with flangeless) 1QF (1 light-engine, square mounting with flange) 1QL (1 light-engine, square flangeless mounting)

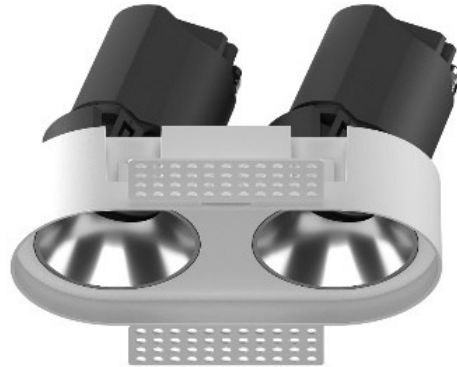
*For informational purposes only. Content is subject to change.

WALL WASHER DOWNLIGHT

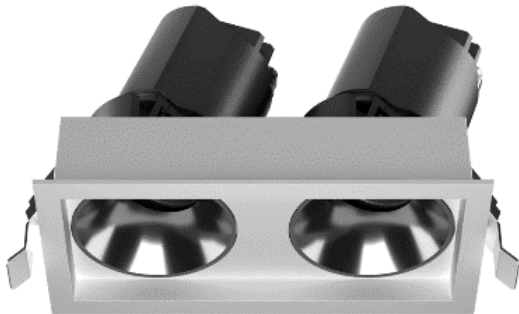
RDW-2 series



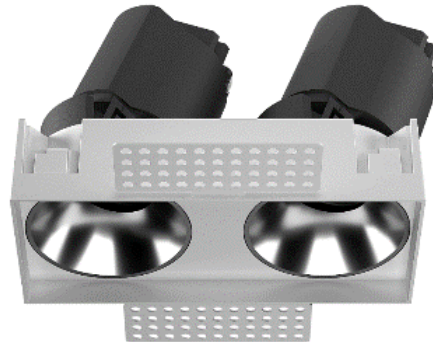
RDW-2RF



RDW-2RL



RDW-2QF



RDW-2QL

Connected by

WIZ



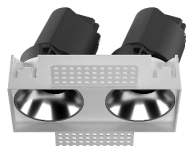
RDW-2RF



RDW-2RL



RDW-2QF



RDW-2QL

Model No.	Ceiling cut-out (mm)	Outer flange (mm)	Height (mm)	Max. wattage (W)	Lumen output (lm)*
RDW75-2RF	177.5 x 88	193.8 x 104.3	112	2 x 10W	1000 - 1180 lm
RDW95-2RF	223 x 109	238.5 x 124.5	134	2 x 20W	2260 - 2640 lm
RDW75-2RL	180 x 90.5	N/A	112	2 x 10W	1000 - 1180 lm
RDW95-2RL	225 x 111	N/A	134	2 x 20W	2260 - 2640 lm
RDW75-2QF	164 x 77	180 x 90.5	112	2 x 10W	1000 - 1180 lm
RDW95-2QF	207 x 95	223.5 x 109.5	134	2 x 20W	2260 - 2640 lm
RDW75-2QL	177.5 x 88	N/A	112	2 x 10W	1000 - 1180 lm
RDW95-2QL	223 x 109	N/A	134	2 x 20W	2260 - 2640 lm

ORDERING INFORMATION

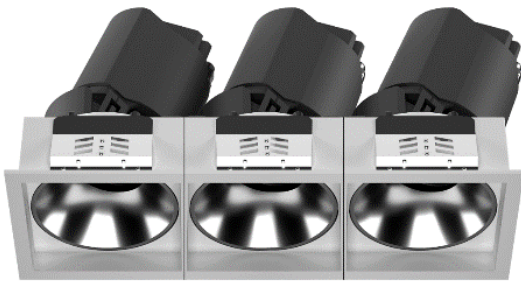
Example Model : RDW95-20-WT-WT-38D-TW-2RF

LED Light-Engine Information										Mounting Information			
RDW	95	-	13	-	WT	-	WT	-	38D	-	TW	-	2RF
Series	Light Engine Size	-	Wattage	-	Body colour	-	Reflector colour	-	Beam angle	-	CCT range	-	Mounting Type
RDW	75	-	10 (10W)		WT White		WT White		15D (15°) 24D (24°) 38D (38°) 60D (60°)		TW 2800K - 6000K@90 CRI *(CRI 80 / 95 on request) RGBTW RGB + CW=6500K + WW=2700K Typ.90CRI (*Max.20W on request)		2RF (2 light-engine, rounded mounting with flange) 2RL (2 light-engine, rounded mounting with flangeless) 2QF (2 light-engine, square mounting with flange) 2QL (2 light-engine, square flangeless mounting)

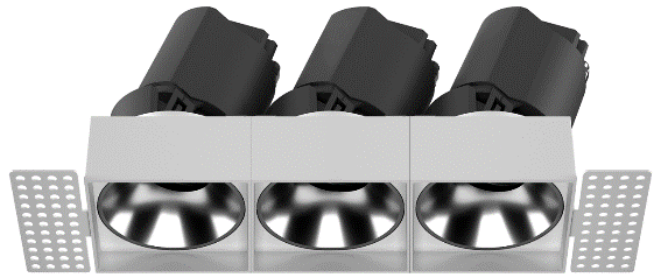
*For informational purposes only. Content is subject to change.

WALL WASHER DOWNLIGHT

RDW-3 / RDW-4 series



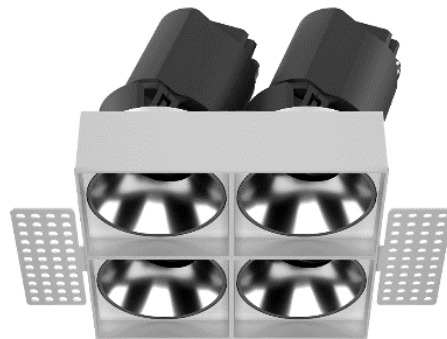
RDW-3QF



RDW-3QL



RDW-4QF



RDW-4QL

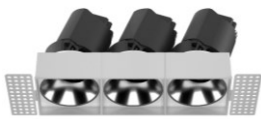
Connected by

WIZ

RDW-3QF / 3QL / 4QF / 4QL series



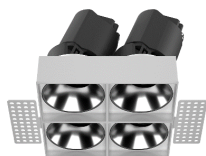
RDW-3QF



RDW-3QL



RDW-4QF



RDW-4QL

Model No.	Ceiling cut-out (mm)	Outer flange (mm)	Height (mm)	Max. wattage (W)	Lumen output (lm)*
RDW75-3QF	222 x 75	231.5 x 84.5	112	3 x 10W	1500 - 1770 lm
RDW95-3QF	284 x 95	293.5 x 104.5	138	3 x 20W	3390 - 3960 lm
RDW75-3QL	224.5 x 77	N/A	112	3 x 10W	1500 - 1770 lm
RDW95-3QL	287 x 97	N/A	138	3 x 20W	3390 - 3960 lm
RDW75-4QF	□150	□158	112	4 x 10W	2000 - 2360 lm
RDW95-4QF	□190	□198	138	4 x 20W	4520 - 5280 lm
RDW75-4QL	□152.5	N/A	112	4 x 10W	2000 - 2360 lm
RDW95-4QL	□192	N/A	138	4 x 20W	4520 - 5280 lm

ORDERING INFORMATION

Example Model : RDW95-20-WT-WT-38D-TW-3RF

LED Light-Engine Information										Mounting Information			
RDW	95	-	20	-	WT	-	WT	-	38D	-	TW	-	3RF
Series	Light Engine Size	-	Wattage	-	Body colour	-	Reflector colour	-	Beam angle	-	CCT range		Mounting Type
RDW	75	-	10 (10W)		WT White		WT White		15D (15°) 24D (24°) 38D (38°) 60D (60°)		TW 2800K - 6000K@90 CRI *(CRI 80 / 95 on request) RGBTW RGB + CW=6500K + WW=2700K Typ.90CRI (*Max.20W on request)		3QF (3 light-engines, rounded mounting with flange) 3QL (3 light-engine, rounded mounting with flangeless) 4QF (4 light-engines, rounded mounting with flange) 4QL (4 light-engine, rounded mounting with flangeless)

*For informational purposes only. Content is subject to change.



SMR series



Model No.	Ceiling cut-out (mm)	Outer diameter (mm)	Height (mm)	Rated wattage (W)	Lumen output (lm)*
SMR130	N/A	Ø130	155	20W	1130 - 1320 lm
SMR170	N/A	Ø170	192	30W	1695 - 1980 lm
SMR195	N/A	Ø195	200	40W	2240 - 2620 lm

*Lumen output at CCT2800K - 60700K. Data for reference only.

Lumen output with different wattage PSU (Power supply unit)

Model No.	14W	20W	30W	40W
SMR130	750 - 875 lm	1130 - 1320 lm	N.A.	N.A.
SMR170	765 - 890 lm	1235 - 1445 lm	1695 - 1980 lm	N.A.
SMR195	780 - 900 lm	1270 - 1485 lm	1790 - 2095 lm	2240 - 2620 lm

*Lumen output at CCT 2800K - 6000K. Data for reference only.

ORDERING INFORMATION

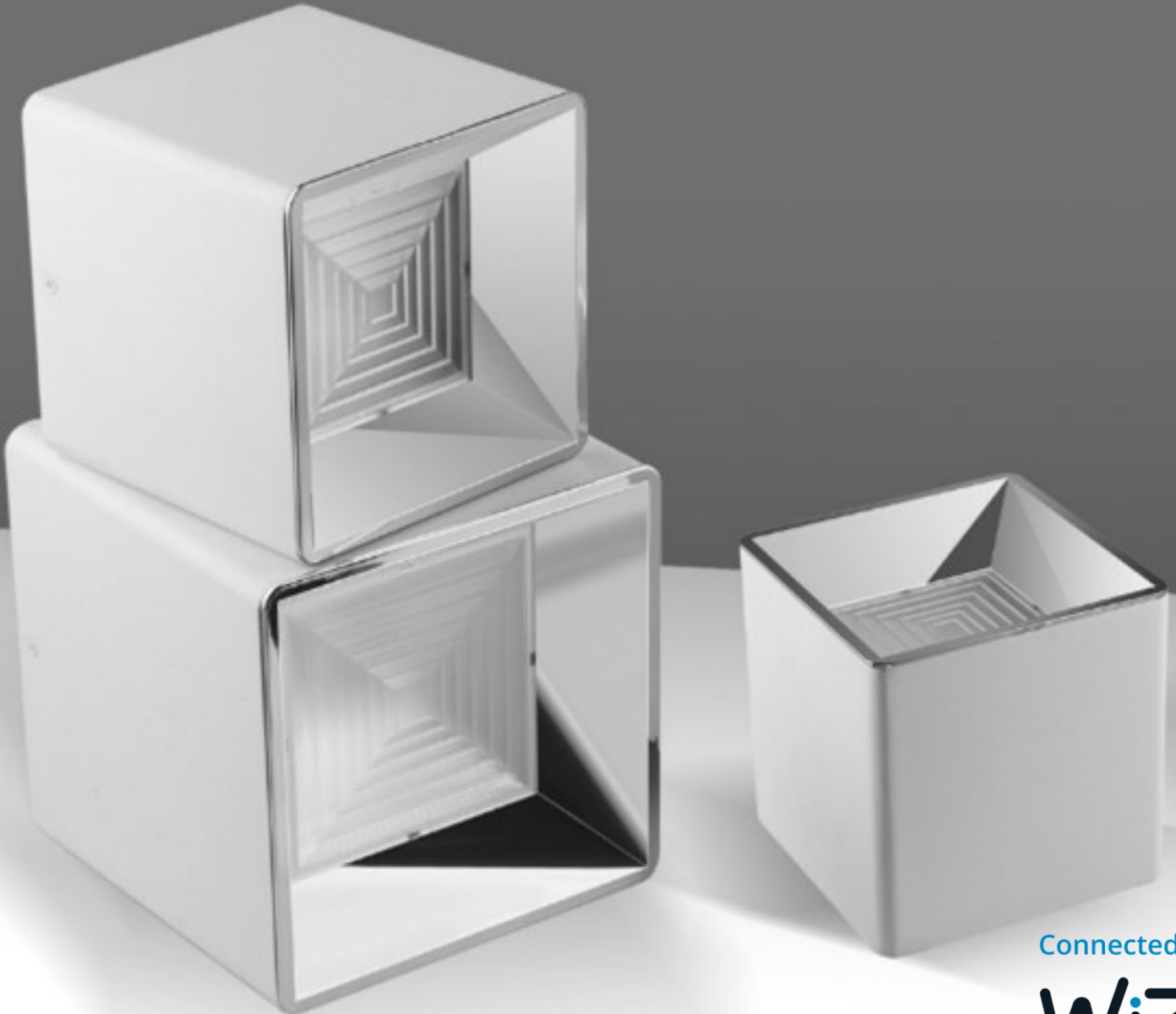
Example Model : SMR110-10-WT-SS-60D-928-960

SMR	110	-	10	-	WT	-	SS	-	60D	-	TW
Series	Diameter	-	Wattage	-	Body colour	-	Reflector colour	-	Beam angle	-	CCT range
SMR	130 (Ø132mm) 170 (Ø170mm) 195 (Ø195mm)		20 (Max.20W) 30 (Max.30W) 40 (Max. 40W)		WT White BK Black		SS Specular Silver DG Dark Gold		60D (60°)		TW 2800K - 6000K@90 CRI *(CRI 80 / 95 on request) RGBTW RGB + CW=6500K + WW=2700K Typ.90CRI *(Max.20W on request)

*For informational purposes only. Content is subject to change.

SURFACE MOUNT DOWN LIGHT

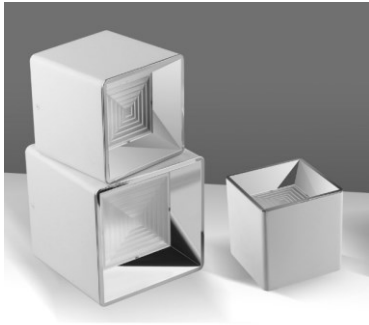
SMT series



Connected by

WIZ

SMT series



Model No.	Ceiling cut-out (mm)	Outer dimension (mm)	Height (mm)	Max. wattage (W)	Lumen output (lm)*
SMT110	N/A	□110	120	20W	1130 - 1320 lm
SMT130	N/A	□130	135	30W	1640 - 1920 lm
SMT160	N/A	□160	165	40W	2260 - 2640 lm

*Lumen output at CCT2800K - 6000K. Data for reference only.

Lumen output with different wattage PSU (Power supply unit)

Model No.	15W	20W	30W	40W
SMT110	750 - 875 lm	1130 - 1320 lm	N.A.	N.A.
SMT130	765 - 890 lm	1235 - 1445 lm	1640 - 1920 lm	N.A.
SMT165	780 - 900 lm	1270 - 1485 lm	1790 - 2095 lm	2240 - 2620 lm

*Lumen output at CCT 2800K - 6000K. Data for reference only.

ORDERING INFORMATION

Example Model : SMR100-10-WT-SS-60D-928-960

SMT	110	-	10	-	WT	-	SS	-	60D	-	TW
Series	Ceiling cut-out	-	Wattage	-	Body colour	-	Reflector colour	-	Beam angle	-	CCT range
SMT	110 (∅110mm)		20 (Max.20W)		WT White		SS Specular Silver		60D (60°)		TW 2800K - 6000K@90 CRI *(CRI 80 / 95 on request)
	130 (∅130mm)		30 (Max.30W)		BK Black		DG Dark Gold				RGBTW RGB + CW=6500K + WW=2700K Typ.90CRI (*Max.20W on request)
	160 (∅170mm)		40 (Max. 40W)								

*For informational purposes only. Content is subject to change.



CIRCAMANTM
HUMAN CENTRIC LIGHTING



Connected by

WIZ

Wiz Pro Bridge Box
For LED strips Light

Bridge Box for LED strip light

Features :

- Works with DC12-36V LED strips
- Tunable White / RGBCW light strips control
- Works with Amazon Alexa / Google Assistant / Samsung SmartThings
- Works with Remote control / Wall Dimmer Switches / Sensor



For Tunable White Light Strips



Light Strips: WW 2700K + CW 6500K

LED Light Strips Voltage: DC12-36V

Max. current: 10A per channel

Total max. current: 10A

For RGBTW (RGB+CCT) Light Strips



Light Strips: RGB + WW 2700K + CW 6500K

LED Light Strips Voltage: DC12-36V

Max. current: 7.5A per channel

Total max. current: 7.5A

Product name Model number	Rated Input Power	Input Voltage	Output Voltage	Output current	Dimensions (L)x(W)x(H)mm
Wiz Pro RGBTW Bridge Box BB-RGBTW-12V-36V	270W	DC 12V – 36V	DC 12V – 36V	Max. 7.5A	85.5 x 45 x 22.2mm
Wiz Pro W Bridge Box BB-TW-12V-36V	240W	DC 12V – 36V	DC 12V – 36V	Max. 10A	85.5 x 45 x 22.2mm



Bridge Box for RGBTW Luminaire

- Works with DC6-40V LED - Constant current output
- Tunable White / RGBCW LED control
- Works with Amazon Alexa / Google Assistant / Samsung SmartThings
- Works with Remote control / Wall Dimmer Switches / Sensor



For RGBTW (RGB+CCT) Light Strips



Light Strips: RGB + WW ~2700K + CW ~6500K

LED Light Strips Voltage: DC6-40V

Product name Model number	Rated Input Power	Input Voltage	Output Voltage	Output current	Dimensions (L)x(W)x(H)mm
Wiz Pro RGBTW Bridge Box BB-RGBTW-8W	16W	DC 48V	DC 6V – 40V	R/G/B: 200mA CW/WW: 400mA Total: 400mA	85.5 x 45 x 22.2mm
Wiz Pro RGBTW Bridge Box BB-RGBTW-14W	22W	DC 48V	DC 6V – 40V	R/G/B: 275mA CW/WW: 550mA Total: 550mA	85.5 x 45 x 22.2mm



Bridge Box for Tunable White Luminaire



For Tunable White LED

Tunable LED: WW ~2700K + CW ~6500K

LED Voltage: DC6-40V

Product name Model number	Rated Input Power	Input Voltage	Output Voltage	Output current	Dimensions (L)x(W)x(H)mm
Wiz Pro TW Bridge Box BB-TW-8W	8W	DC 48V	DC 6V – 40V	CW: 200mA WW: 200mA Total: 200mA	85.5 x 45 x 22.2mm
Wiz Pro TW Bridge Box BB-TW-14W	14W	DC 48V	DC 6V – 40V	CW: 350mA WW: 350mA Total: 350mA	85.5 x 45 x 22.2mm
Wiz Pro TW Bridge Box BB-TW-20W	20W	DC 48V	DC 6V – 40V	CW: 500mA WW: 500mA Total: 500mA	85.5 x 45 x 22.2mm
Wiz Pro TW Bridge Box BB-TW-30W	30W	DC 48V	DC 6V – 40V	CW: 750mA WW: 750mA Total: 750mA	85.5 x 45 x 22.2mm
Wiz Pro TW Bridge Box BB-TW-40W	40W	DC 48V	DC 6V – 40V	CW: 1000mA WW: 1000mA Total: 1000mA	85.5 x 45 x 22.2mm

*For informational purposes only. Content is subject to change.

Wiz Pro - Transformer and luminaries PSU

Luminaries PSU - WiZ Pro LED Drivers



Xitanium 8W/13W/20W



Xitanium 44W

Product name	Rated Input Power	Input Voltage	Output Voltage	Output current	Dimensions (L)x(W)x(H)mm
Xitanium 8W 0.15/0.2A 42V WiZ TW 230V	10.5W	AC 220 - 240V	DC 30 - 42V	150 / 200mA	115 x 45 x 29mm
Xitanium 13W 0.25/0.3A 42V WiZ TW 230V	15.5W	AC 220 - 240V	DC 30 - 42V	250 / 300mA	115 x 45 x 29mm
Xitanium 20W 0.35/0.5A 40V WiZ TW 230V	20W	AC 220 - 240V	DC 30 - 40V	350 / 500mA	115 x 45 x 29mm
Xitanium 44W 0.7-1.05A 42V WIZ TW 230V	51.2W	AC 220 - 240V	DC 30 - 42V	700 / 800 / 900 / 1050mA	108 x 68 x 32mm

Wiz Pro - Wireless Panel (Wall Dimmer)

WiZ Pro Wireless Panel



Wiz Pro Wireless Panel AC – Grey



Wiz Pro Wireless Panel DC – Grey



Wiz Pro Wireless Panel RB – Grey



Wiz Pro Wireless Panel AC – White



Wiz Pro Wireless Panel DC – White



Wiz Pro Wireless Panel RB – White

Product name	Power supply input	Battery life	Dimensions (L)x(W)x(H)mm
WiZ Pro Wireless Panel AC – (Grey / White)	220V - 240V AC input	N/A	86 x 86 x 41.8mm
WiZ Pro Wireless Panel DC – (Grey / White)	CR123A battery	720 days*	86 x 86 x 41.8mm
WiZ Pro Wireless Panel RB – (Grey / White)	Lithium ion 3.7V rechargeable battery	150 days*	86 x 86 x 41.8mm

* @Press keypad 30 times a day

